

Take a closer look at

OPPORTUNITIES FOR THE INFORMATION TECHNOLOGY (IT) INDUSTRY AT BRUNSWICK LANDING

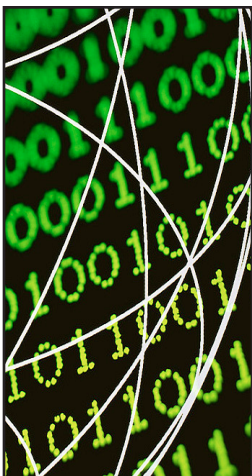


The recently closed Naval Air Station Brunswick (NASB) leaves behind a complex of buildings that are already wired with sophisticated high-speed connectivity. The Midcoast Regional Redevelopment Authority (MRRRA) is committed to

expanding the information technology (IT) industry in Maine by integrating the existing IT infrastructure with upgrades and state of the art equipment at the newly developed Brunswick Landing: Maine's Center for Innovation.

In the late 1990s, the Navy began an extensive installation program of fiber optic cabling throughout NASB. This investment in technology made it possible to transfer vast amounts of information at what was once considered inconceivable speeds (10 Mbps to 100 Mbps). From 2003 until 2008, the Navy continued augmenting the fiber optic network by adding **single mode fiber cabling** along side the existing multimode fiber network. This upgrade was done to take advantage of the drastic increases in bandwidth that single mode fiber provides largely due to improvements in the silica/glass used in its core construction. The single mode fiber connecting most buildings at NASB can operate at **1 to 5 Gbps**.

■ WHY LOCATE AT BRUNSWICK LANDING?



- Over 200 buildings totaling 1.5 million square feet of commercial and industrial open space including warehousing, office and training facilities
- Single mode fiber connecting most buildings can operate at 1 to 5 Gbps (gigabits per second)
- Available, trained workforce
- Accessible to Route 1, I-295 and I-95
- Only a short distance from Portland to the south and Augusta (the State's capitol) to the north

■ IT ASSETS AT BRUNSWICK LANDING

The following are considered the three greatest IT assets at Brunswick Landing:

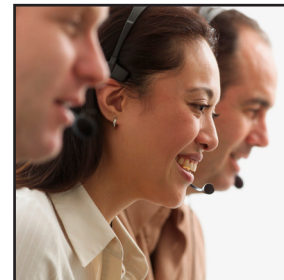
- Single mode fiber optic network which is 10 to 30 times faster than the best multimode fiber cabling available in the marketplace.
- Avaya Definity G3r switch, capable of managing voice, data, images and video at significant speeds
- A Point of Presence (POP) for telephone switching

■ LINE RATES/CAPACITY

- Single Mode Fiber - 1 to 5 Gbps
- Multimode Fiber - 10 to 100 Mbps
- DSL provided by FairPoint Communications
- Multiprotocol Label Switching (MPLS) - Speeds starting at 10 Gbps (Spring 2009)

■ TARGET BUSINESSES

- Contact Centers
- Data Secured Facilities
- Internet Hotels
- Help Desk Centers
- Tech Support



■ BUSINESS INCENTIVES

A number of business incentives for new, relocating and existing businesses are offered by the Midcoast community and the State.

- Military Redevelopment Zones (MRZ)
- Tax Increment Financing (TIF)
- Community Development Block Grants (CDBG)
- Foreign Trade Zone designation
- Workforce Training such as:
 - BRAC IT Training Initiative
 - Maine Quality Centers Program
 - Maine Apprenticeship Program

■ FOR MORE INFORMATION

For more information please contact:
Steve Levesque, Executive Director
207-798-6512 or stevell@mrra.us



■ SEE BACK PAGE FOR A DESCRIPTION OF THE FACILITIES AT BRUNSWICK LANDING

Facility Connectivity at Brunswick Landing

The following chart identifies the top 15 facilities at Brunswick Landing for IT reuse potential. Many of these facilities have large open floor plans and both single and multimode fiber connections. Buildings 43 and 223 are highlighted to delineate their importance as a demarcation point and server farm.

Facility	Num	Facility name	Multi-Mode	Single Mode (NMCI)	Size of facility (sq. ft)
	5	Hangar 5	x	x	163,454
	6	Hangar 6	x	x	166,335
	9	Old Housing Office		x	8,723
	11	Navy Exchange			52,381
	25	Fitness Center		x	16,658
	43	Telephone Building Demarcation Point	x	x	1,156
	53	Public Works	x	x	10,000
	54	Fleet Aviation Specialized Operation (FASO)	x	x	30,000
	86	Ground Support Equipment Bldg	x	x	31,980
	223	NMCI Server Farm	x	x	4,284
	250/4	Hanger/AIMD	x	x	184,400
	292	Fire Station	x	x	10,665
	583	Bowling Alley		x	19,380
	585	Chapel	x	x	13,610
	750	Visitors Quarters		x	115,000