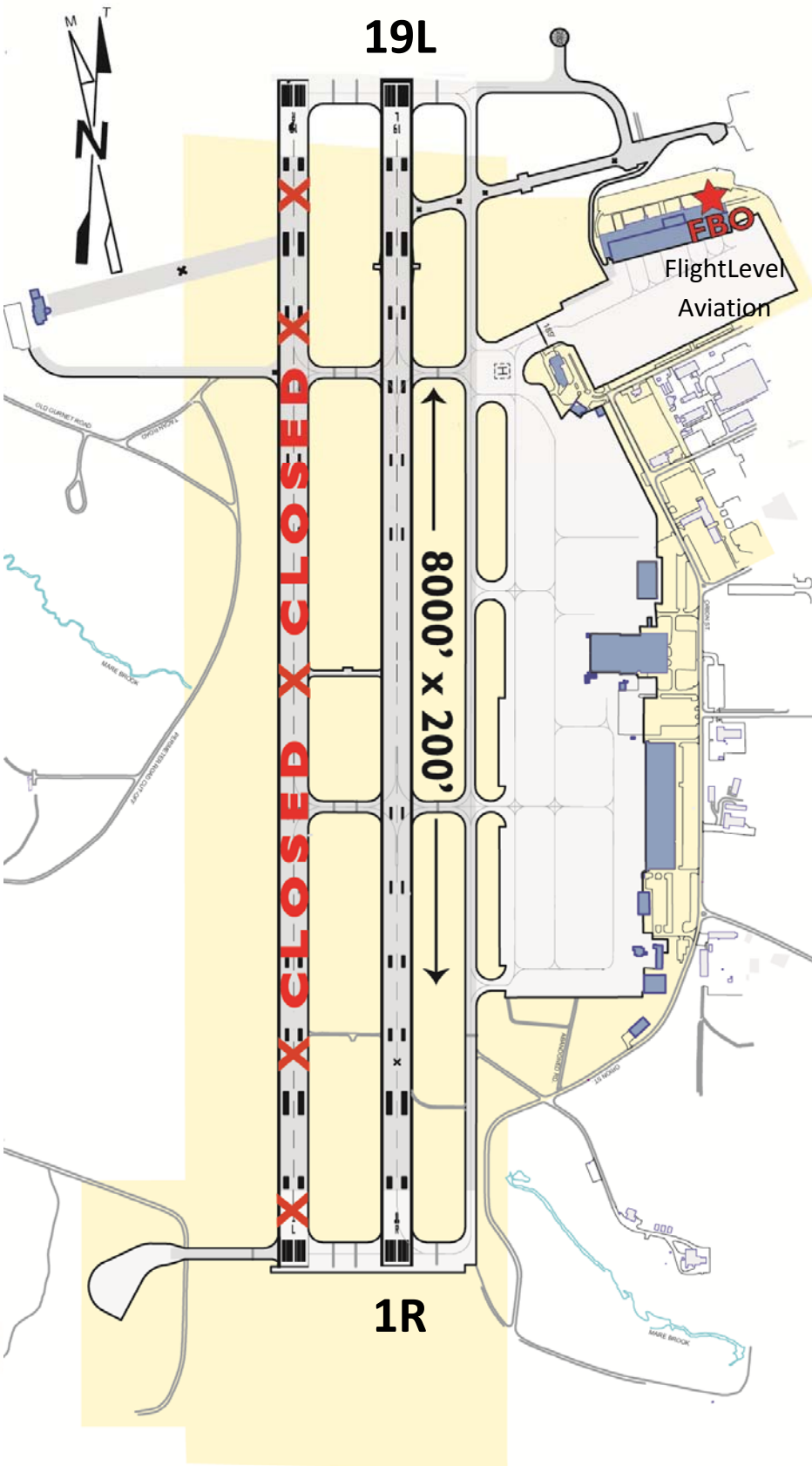




## BXM Airport Guide



**BXM Location:** 2 SE from the town of Brunswick, ME  
**Time Conversion:** UTC -5(-4DT)  
**Airport Reference Pt:** N 43 -53' -32.0 | W 69 -56' -19.01  
**Chart:** New York  
**Instrument Approach Procedures:** RNAV (GPS) RWY 1R and RWY 19L  
**Elevation:** 75' highest elevation  
**Fuel:** 100LL, Jet A  
**Traffic Pattern Altitude:** 1100 (1025)  
**NOTAM:** File BXM  
**FAA inspection:** Not insp  
**RWY 1R & 19L:** Hard Surface 8000x200(ASPH-CONC)  
**RWY 1L & 19R:** CLOSED  
**Class:** E **Communications:** Unicom 122.725  
**Lighting:** HIRLS **Variation:** 18W  
**ARTCC:** BOSTON CENTER  
**FSS:** BANGOR FLIGHT SERVICE STATION  
**FBO:** FlightLevel Aviation – 207.406.2081

### Airport Remarks:

Right Traffic 01R/Left Traffic 19L. Runways 01L and 19R closed until further notice. Pilot controlled lighting via the Unicom. FBO services on northeast side of airport at Hangar 6. Approach: RNAV (GPS) RWY 1R and RWY 19L. Approach lighting out of service. PAPI out of service. Rotating Beacon out of service. Bird activity in the vicinity of the airport

### Nearby airports with instrument procedures and weather information:

- [KIWI](#) - Wiscasset Airport (11 nm NE)
- [KLEW](#) - Auburn/Lewiston Municipal Airport (18 nm NW)
- [KPWM](#) - Portland International Jetport (22 nm SW)
- [KAUG](#) - Augusta State Airport (26 nm N)
- [81B](#) - Oxford County Regional Airport (28 nm NW)

### Nearby radio navigation aids

VOR radial/distance	VOR name	Freq	Var
<a href="#">AUG</a> r211/26.4	AUGUSTA VOR/DME	111.40	18W